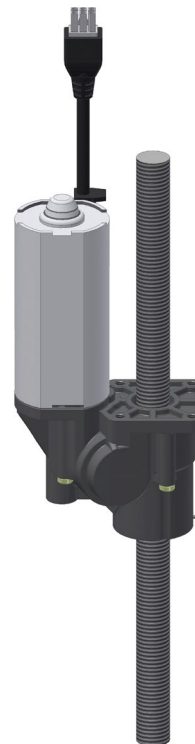


## **“Inline” height adjustment for heavy-load columns in medicine and rehab**



Customized Solution

111512

40 mm  
|——|

### **Move heavy loads smoothly – work ergonomically**

When it comes to operating tables and X-ray tables, it's particularly important that they be easy to handle and capable of carrying heavy weights. Ketterer has developed a linear drive that completely integrates into the lifting column of the treatment table without any disruptive components sticking out. This enables optimal freedom of motion for doctors and staff as well as unproblematic treatment, even for heavy patients.

Thus, the height adjustment system fulfills all requirements for ergonomic work in doctor's offices and clinics.

The drive's linear motion is generated by a gear motor-spindle combination. The table's height can be adjusted seamlessly with a manual switch. Furthermore, the drive is extremely quiet and maintenance-free – two major pluses in the field of medicine.

The compact drive is flexibly customizable for lifting columns of all sizes and for varying load requirements, making it suitable for a whole array of further uses – for example, in laboratories, workshops or even in kitchen furniture.