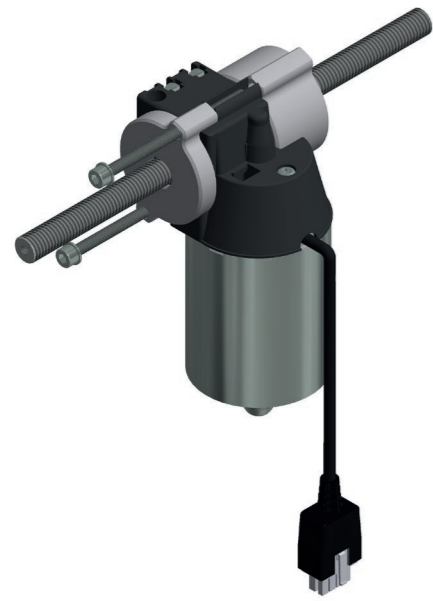


Drive with throughgoing spindle 3146



Description

Direct current motor with worm gear and through-going not rotating spindle for push and pull movements.

Special features

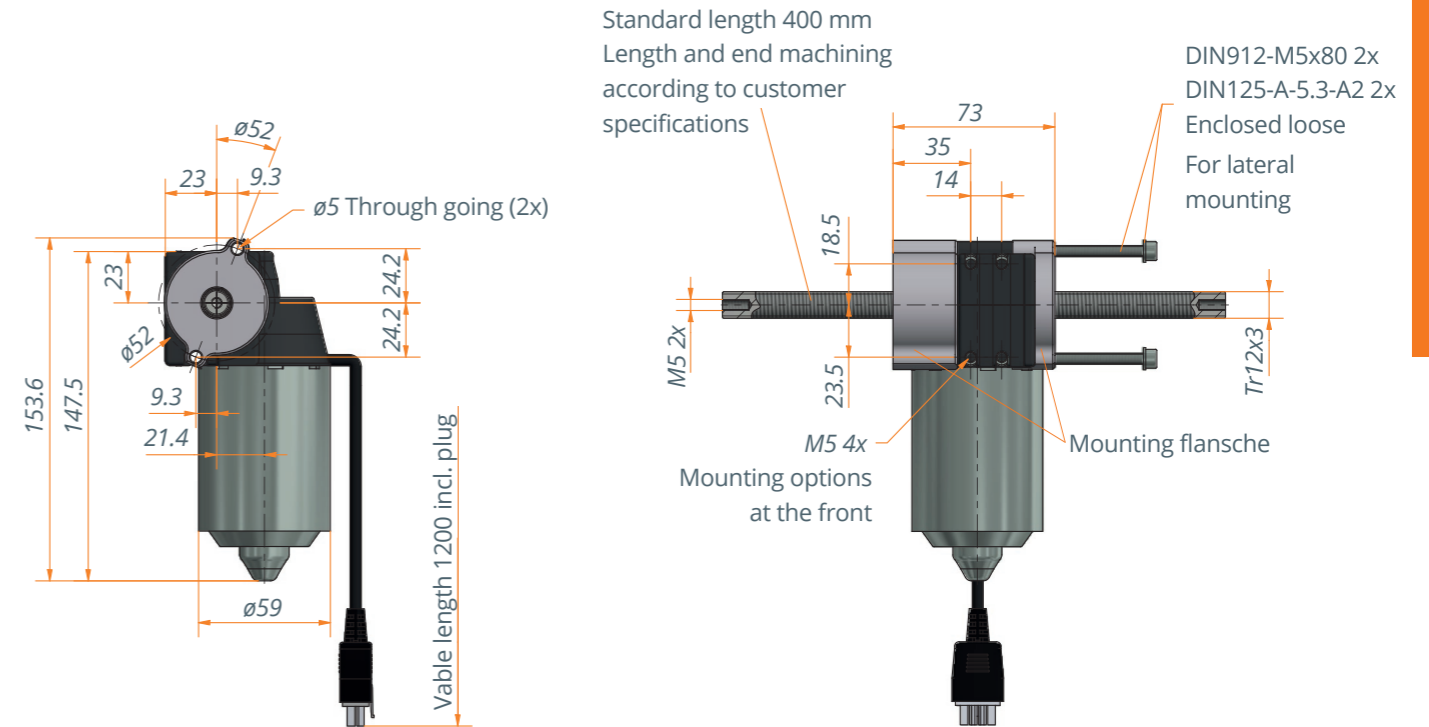
- Two integrated Hall sensors for detecting the rotations and the direction of rotation
- With through-going spindle TR12x3 as standard
- Other spindle types available on request
- Spindle material, finishing and length of the spindle according to customer specifications



Technical data

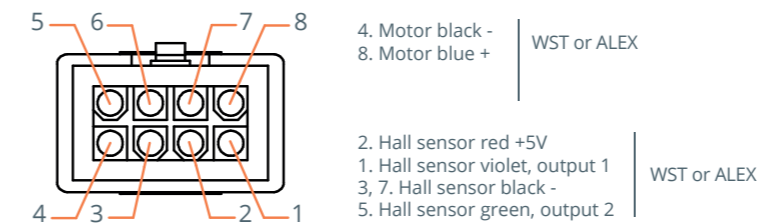
Model	3146.00-0003
Drive motor	DC Motor 24 V
Sensor/Power supply	Hall/5 V DC/0.3 A
Protection class	IP30
Duty cycle	20% (at 5 min.)
Idle running speed	115 rpm (24 V) 120 rpm *
Type of spindle	Tr12x3 RH
Spindle length	in standard 400 mm Customized lengths possible
Max. drive torque	1200 N
Movement speed	6 mm/s

* in combination with LogicData Compact-3 control box



Pin assignment

View A



Technical notes

- Depending on the the spindle pitch, the system could back-drive
- Attention: The mounting flange are only plugged together on the motor housing. When installing them in the system, the mounting holes on the side should be used and screwed on with the screws supplied loose. If side mounting is not required, the mounting flange can simply be omitted
- The drive can be installed both horizontally and vertically