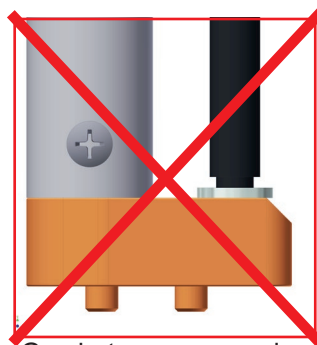
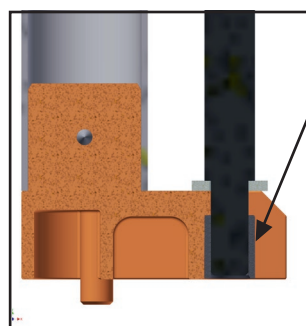
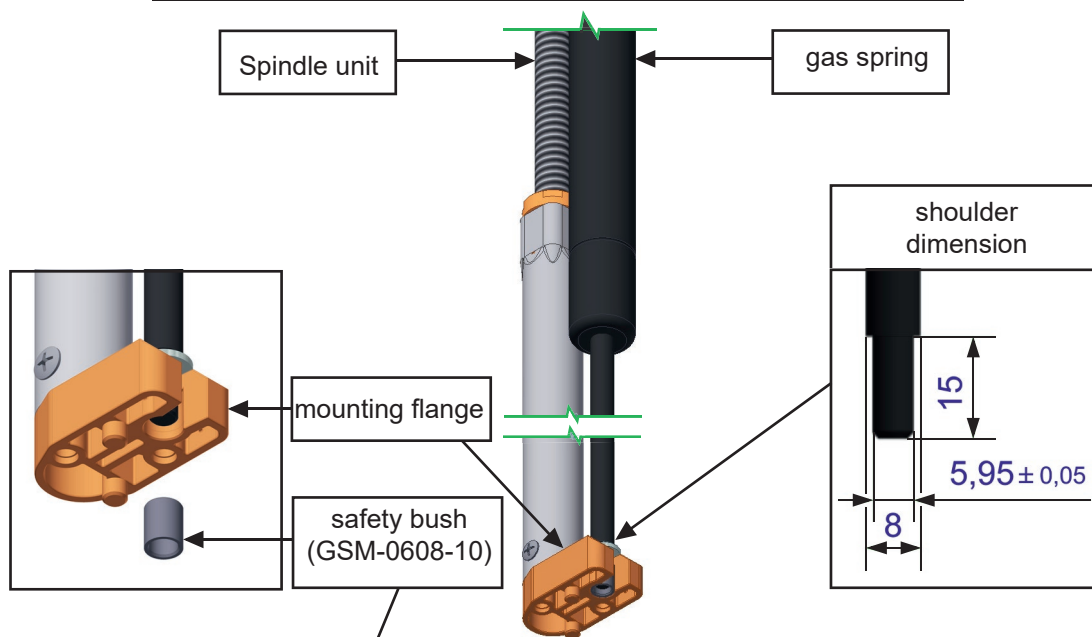
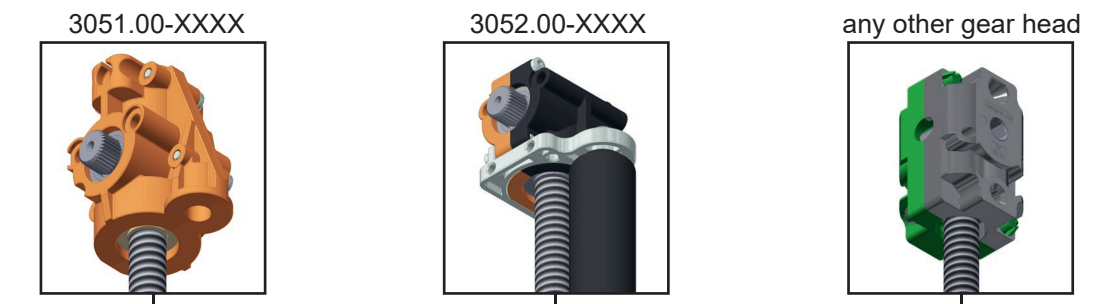
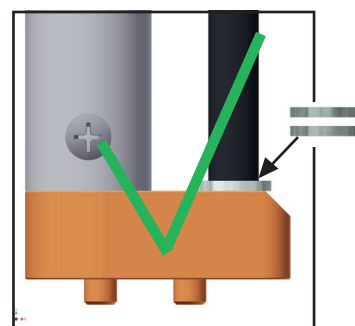


Assembly instruction for gas spring

1. It is necessary to use the safety bush to lock the gas-spring at the lower mounting flange.
2. Gap between gas spring and mounting flange is not allowed. The gap must be compensated with distance washer.



Gap between gas spring and flange



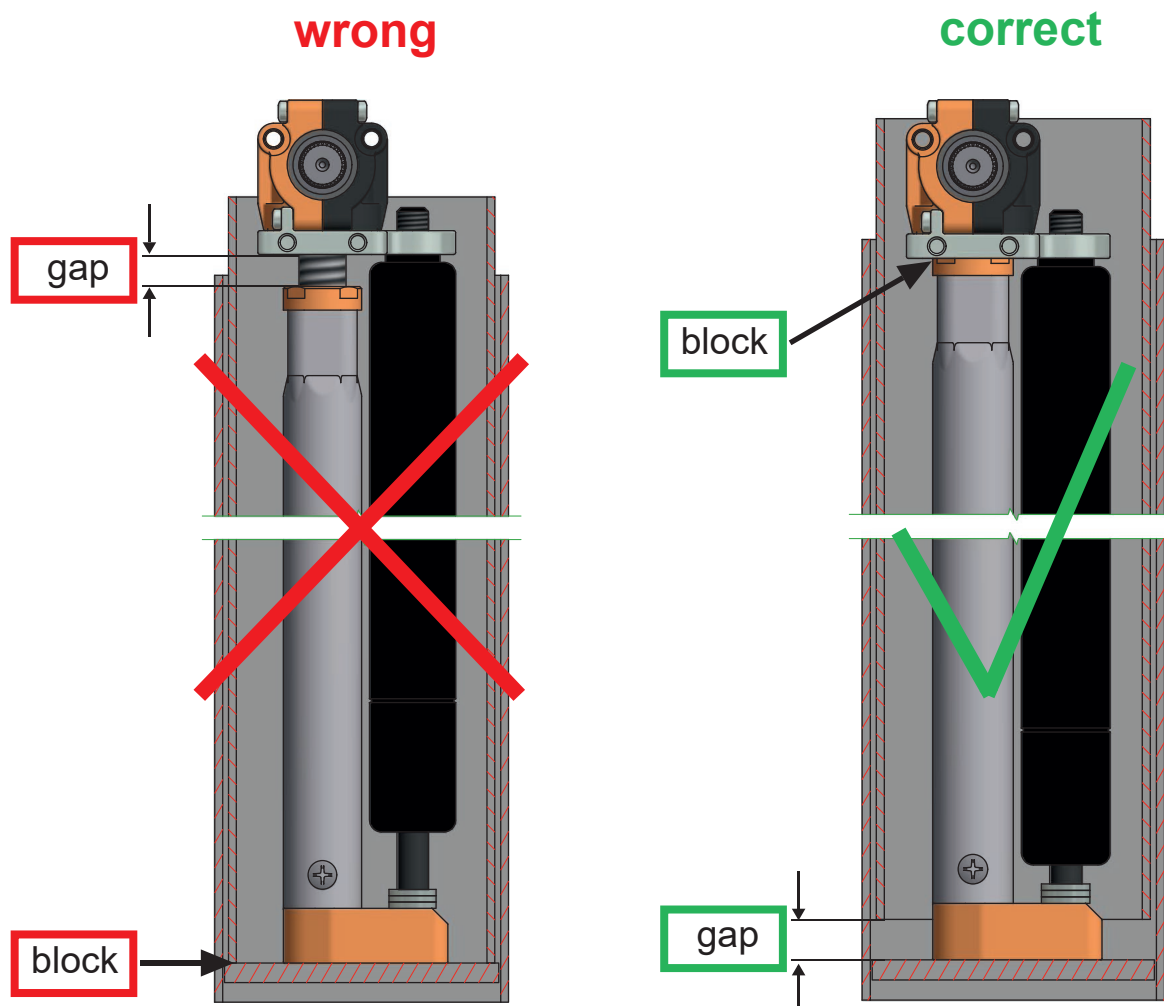
No gap between gas spring and flange; min. 1-max. 3 washer needed (DIN125-A-6,4)

Assembly instruction

3051.00
3052.00

Construction note

Ensure that by having reached the physical end-/"block"-position of the drive unit the physical endposition of the column shouldn't be reached. See pictures below.



Attention!: In case of wrong leg design the drive unit could be damaged.

B. Ketterer Söhne GmbH & Co. KG

Bahnhofstraße 20
78120 Furtwangen
Deutschland

Telefon: +49 7723 9323-0
Telefax: +49 7723 9323-250
E-Mail: info@ketterer.de
Web: www.ketterer.de

© B. Ketterer Söhne GmbH & Co. KG